

Battery System Confirmation 电池系统确认书

S5165L Battery System S5165L 电池系统

Document No/文件编号: RD-S5165L-S-01

Version/版本: A.0.1

Date/日期: 2024.8.8

S5165L Battery System

Type/类型	Parameter/参数
Product Name/产品名称	Battery System/电池系统
Product Model/产品型号	S5165L
Product Specification/产品规格	65Ah 16S1P
Prepared by/拟制	Aron. Ye
Examined by/审核	
Approved by/批准	-
Customer confirmation/客户确认	

1.Product Overview/产品概况

1.1.Technical specification/技术要求

Item 项目	Unit 单位	Specifications 规格	Remarks 备注
Rated capacity 额定容量	Ah	65Ah	@ 0.5C · 25°C
Configuration 配置	-	16S1P	
Operating temperature 操作温度	Charging working temperature 充电工作温度	°C	0~55
	Discharge working temperature 放电工作温度	°C	-20~55
Storage temperature 存储温度	Short-term (within 1 month) 短期 (1个月内)	°C	-20~45
	Long-term (within one year) 长期 (一年内)	°C	0~35
Rated voltage 额定电压	V	51.2	Cell 3.2V
Maximum voltage 最大电压	V	58.4	Cell 3.65V
Minimum voltage 最小电压	V	40	Cell 2.5V
Standard capacity 常规容量	kWh	≥ 3.328	@ 0.5C · 25°C
Weight 重量	Kg	≤ 4.0	
Maximum discharge current 放电最大电流 (@20S, 25°C, SOC50%, BOL)	A	200	
Maximum charging current 充电最大电流	A	80	

(@3S, 25°C, SOC 50% BOL)			
Continuous discharge current 连续放电电流 (@25°C, SOC50%, BOL)	A	100	
Continuous charging current 连续充电电流 (@25°C, SOC 50% BOL)	A	65	
SOCstatus of battery system Standard Charge (@25°C) 标准充电 (@25°C)		Constant Current: ≤0.5C Constant Volt- age:3.65V End Condition(Cut off): ≥0.02C	
SOCstatus of battery system before shipment 出货前电池系统 SOC 状态	-	SOC 30%±3%	
Self-discharge rate 自放电率 (@SOC 100%,25°C , Loss/Month · @BOL)	%	Max 3	
Safe reliability 安全可靠 性	-	GBT Certificate	cell
Insulativity 绝缘	MΩ	Min 20MΩ/1000VDC	@25°C±5°C, RH50%
Cooling mode 冷却方式	-	Natural(Passive) Convection	
Working range of SOC SOC 工作范围	%	0~ 100%	
Ingress protection IP 防护等级	-	IP67	
Cycle life 循环寿命		>3500	@25°C, 0.5C charge, 1Cdis- charge, DOD 70%(SOC0~100%)
Remaining capacity at the end of life 寿命终止剩余容量		EOL 70%	According to warranty period, driving pattern, temp. profile, etc 根据保修期间, 如驾驶模式、 温度剖 面等

In Parallel Function/并联功能		NO	不支持
------------------------------	--	----	-----

1.2.Mechanical Interface/机械界面

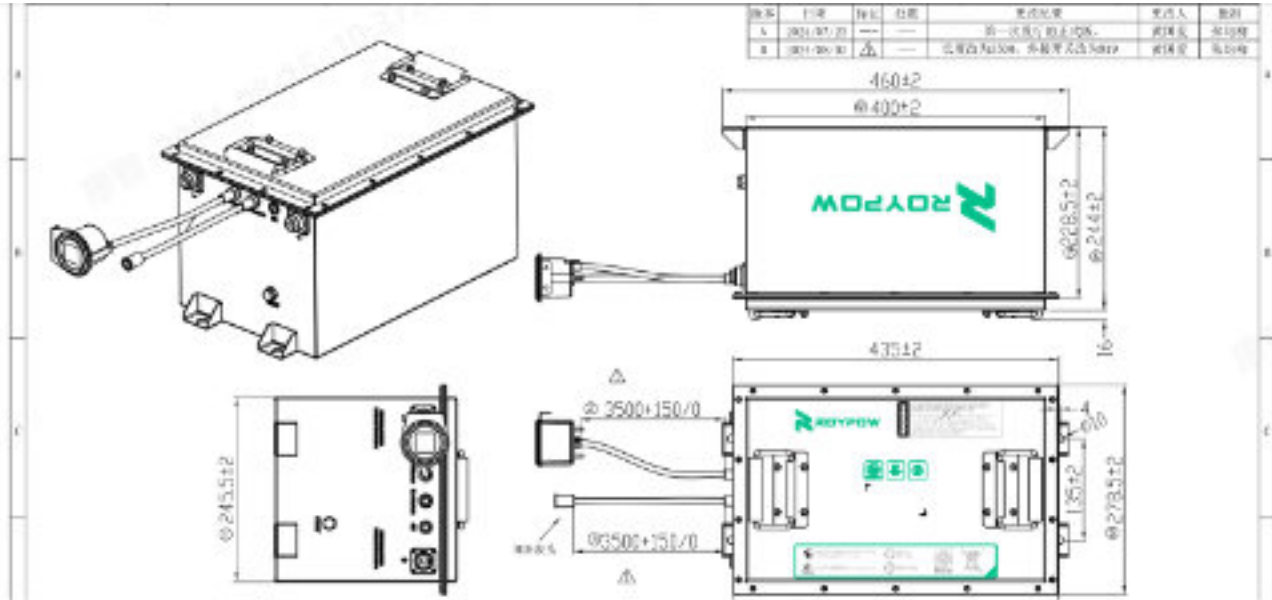


Figure 1.System Tolerance

图 1.系统公差

Basic Dimensions/基本尺寸表

Name 名称	Size 尺寸
Size of battery system 电池系统尺寸(mm)	460(L) x 278.5(W) x 260(H)

2. Requirements for Packaging/包装要求

2.1. Schematic Diagram of Packaging/包装示意图



Figure 2. Schematic Diagram of Packaging

图 2. 包装示意图

2.2. Packing List/装箱清单

NO.	Part Name 产品名称	Part Number 产品编码	Product Specification 产品规格	Package Quantity 包装数量
1	Battery system 电池系统	S5165L	65Ah 16S1P	1pcs
2	Electricity meter 电量表头	S4855SW-A	-	1pcs
3	Meter connecting wire harness 表头外接线束	S4855SW-A	-	1pcs
4	Quick guide 快速指南	S4855SW-A	-	1pcs