

T7

Per escavatori 5.0-8.0 ton / For excavators 5.0-8.0 ton

TRINCIATRICI IDRAULICHE
HYDRAULIC MULCHERS



T7 105	
T7 125	

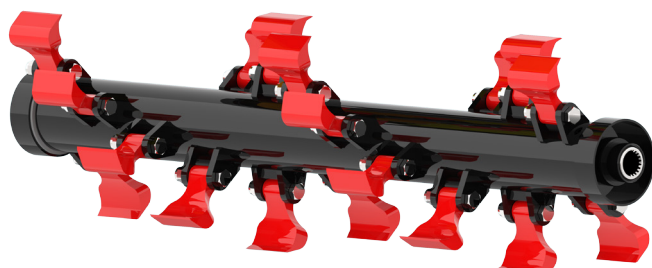
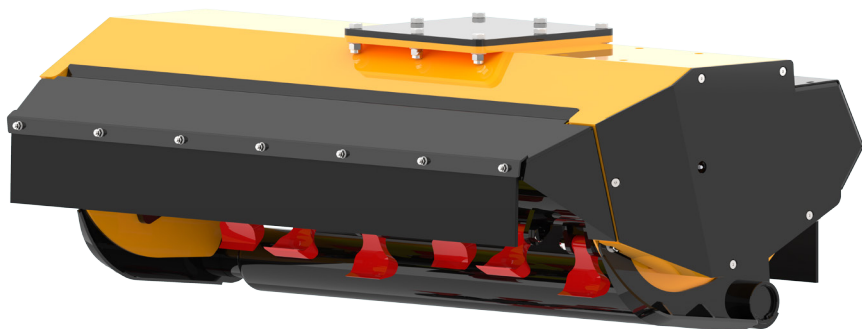





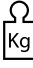



HF3
Ø max 8 cm

di serie
standard equipment



KF3
Ø max 6 cm



Modello Model	 (ton)	 (cm)	 (LxAxH cm)	 Kg	Cilindrata motore Motor displacement	 (L/min)	 bar (min-max)	Trasmissione Transmission	Rotore Rotor	
T7 105	5.0-8.0	105	125x75x50	220	22-27-34	60-70-80	200-220	diretta direct	elicoidale helical	16
T7 125	6.0-8.0	125	145x75x50	250	22-27-34	60-70-80	200-220	diretta direct	elicoidale helical	20

CARATTERISTICHE TECNICHE E DOTAZIONI STANDARD

- Trasmissione diretta.
- Cofanatura interna a doppia cassa con intercapedine.
- Rullo di appoggio regolabile su 3 posizioni per variare l'altezza di taglio.
- Rotore elicoidale con mazze bonificate o coltelli intercambiabili.
- Protezione carter motore.
- Supporti rotore interni con labirinto per la protezione dei cuscinetti dalle impurità.
- Cuscinetti rotore a doppia corona di sfere orientabili di prima qualità.
- Blocco valvole comprensivo di valvola prioritaria per regolazione della portata olio, antiurto (valvola di max pressione), anti-cavitazione.
- Motore ad ingranaggi in ghisa.
- Protezioni antinfortunistiche in gomma a norma CE.

TECHNICAL FEATURES AND STANDARD EQUIPMENT

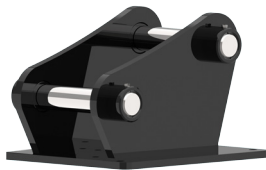
- Direct transmission.
- Internally reinforced with double metal sheet.
- Feeler roller adjustable on 3 positions to change the height of the cut.
- Helicoidal rotor with austempered hammers or blade interchangeable.
- Protective cover for motor.
- Inside rotor supports with labyrinth for the protection of the bearings from the impurities.
- Double row spherical adjustable bearings of 1st quality.
- Valves block complete with priority valve for adjusting oil flow, anti-shock valve (pressure relief valve), anti-cavitation.
- Cast iron gear motor.
- Accident prevention rubber protections according to EC directives.

ACCESSORI

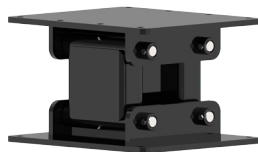
- 1 - Attacco sella a perni.
- 2 - Kit tubi Lg. 2 metri.
- 3 - Supporto autolivellante (+40kg).
- 4 - Ralla girevole idraulica (senza autolivellante).
- 5 - Detrazione blocco valvole, solo anticavitazione.

ACCESSORIES

- 1 - Mounting hitch & pins.
- 2 - Hoses kit Lg. 2 meters.
- 3 - Self-levelling support (+40kg).
- 4 - Hydraulic rotation device (not self-levelling support).
- 5 - Valves block deduction, only anticavitation.



1



3



4